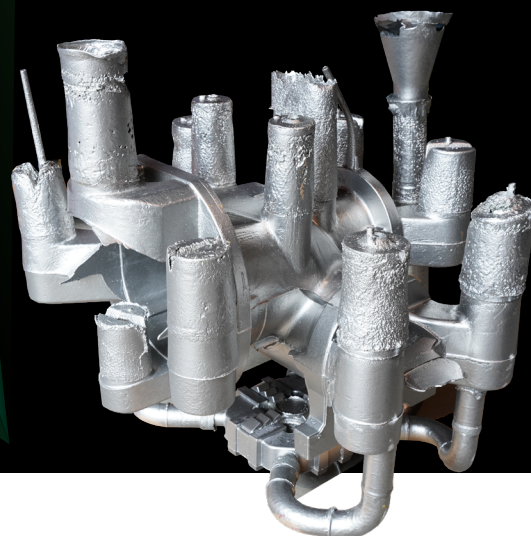


Use of HOLLOTEX* EG Runner ST for steel castings



SUSTAINABILITY

THE CHALLENGE

Ceramic holloware systems are frequently used for hand moulding and are actively employed in both iron and steel. Since the introduction of the HOLLOTEX EG Runner in 2009, foundries have been offered an interesting alternative in iron casting. Unfortunately, this system was previously not applicable in steel castings due to the higher pouring temperatures.

FOUNDRY:

Schmees cast with locations in Pirna and Langenfeld

SCHMEES
cast



is a well-known, family-owned stainless steel foundry group. Schmees has been producing precision castings in more than 300 different metal grades for customers in the food and pharmaceutical industries, power engineering as well as pump and valve construction for over 60 years.

PARAMETER

Alloy:	GX 40CrNi27-4
Casting weight:	140 kg
Pouring temp.:	1540 °C
Pouring weight:	480 kg
Pouring time:	35 s
Moulding Process:	Hand moulding / Furane

FOSECO PRODUCTS

HOLLOTEX EG Runner ST Ø70 and Ø50 mm
Filter: 8 x STELEX* ZR 75x75x25/10
Feeder: KALMIN* Sleeves:
9 x KSP 9/12 K
1 ½ KSI 4
2 x KSI 3
1 ½ OKS 5 with OLD 5



OUR SOLUTION

Due to the application of a highly refractory coating to the inner surface of the HOLLOTEX EG Runner ST System, it can be also used for steel casting applications.



Easy-to-cut components



Simple push fit assembly



No risk of ceramic residues in the sand system

KEY BENEFITS

- Faster and easier assembly of the gating system
- Less contamination of the sand system
- Lower disposal costs
- Less wear in sand reclamation due to elimination of ceramic residues
- Less moisture absorption, therefore less gas defects

> LET'S LEARN MORE



THINK BEYOND. SHAPE THE FUTURE.



VESUVIUS
A VESUVIUS GROUP COMPANY

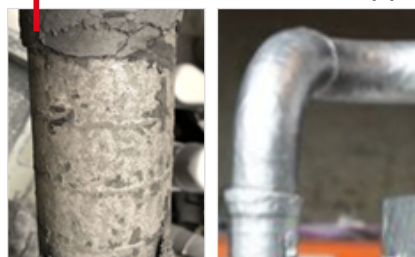
THE OUTCOME

The highly refractory internal coating surface ensures that the components can withstand the demands of higher casting temperatures in steel applications. In addition, L-pieces have been replaced by elbows for more uniform, low-turbulence mould filling.

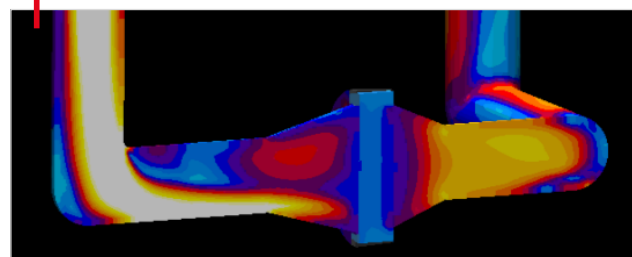
Penetration defects in steel castings using standard HOLLOTEX EG Runner parts.



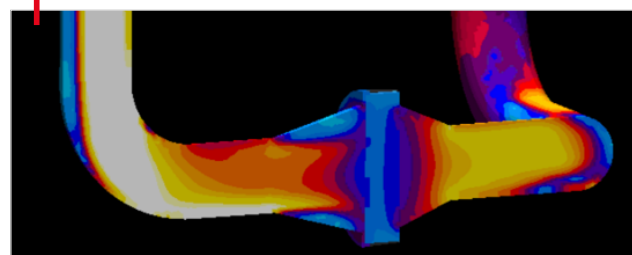
Clean and smooth surface with HOLLOTEX EG Runner ST in steel applications



L-piece with significant differences in velocity after 90 ° change of flow



Elbow with a much more even velocity distribution



COMMENT: Editorial policy is to highlight the latest Foseco products and technical developments. However, because of their newness, some developments may not be immediately available in your area. Your local sales organisation will be pleased to advise. No part of this publication may be reproduced, stored in a retrieval system of any nature or transmitted in any form or by any means, including photocopying and recording, without the written permission of the copyright holder. © Foseco International Ltd., 2023 *FOSECO, HOLLOTEX, KALMIN and STELEX are trade marks of the Vesuvius Group, unregistered or registered in certain countries, used under licence.

